



TM-SCS-F クランピングスクリュー

Clamping Screw



特長

ボール部は9°までフレキシブルに回転。相手が傾斜面でも確実にクランプします。

用途

工作機器・治工具・各種金型・試験機等

仕様

ボール部硬度：HRC56～60

注意事項

ばねによるストロークはありません。

Characteristic

The ball rotates 9° flexible. It securely clamps even if the subject is tilting.

Application

Machine tools / Jig sand tools / Various kinds of metal molds / Testing devices, etc.

Specification

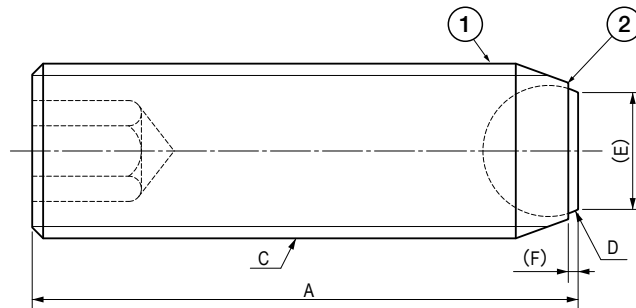
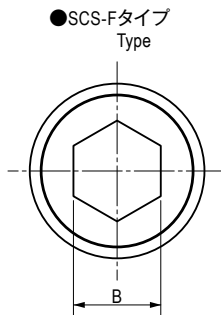
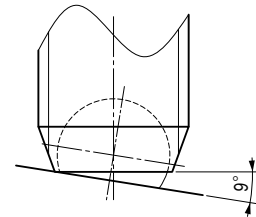
Hardness of the Ball : HRC56～60

Note

No stroke caused by a spring.

■部品表 Parts List

| 部番 No. | 部品名 Part Name | 材質 Material | 処理 Finish | 数 Quantity |
|--------|---------------|-------------|------------------------|------------|
| 1 | 本体 Body | SCM435 | 四三酸化鉄皮膜(黒) Black Oxide | 1 |
| 2 | ボール Ball | SUJ2 | — | 1 |



寸法・仕様表 Size List & Specification

| 型番 Model No. | A | B | C | D | (E) | (F) | 自重(g) Net Weight (g) |
|-----------------|----|---|-----|------|---------|--------|----------------------|
| TM-SCS-M6×10-F | 10 | 3 | M6 | φ4 | (φ3.2) | (0.45) | 1.5 |
| TM-SCS-M6×16-F | 16 | | | | | | 2.5 |
| TM-SCS-M6×25-F | 25 | | | | | | 4 |
| TM-SCS-M8×10-F | 10 | 4 | M8 | φ5.5 | (φ4.5) | (0.5) | 2.5 |
| TM-SCS-M8×12-F | 12 | | | | | | 3.2 |
| TM-SCS-M8×20-F | 20 | | | | | | 5.7 |
| TM-SCS-M8×30-F | 30 | | | | | | 9 |
| TM-SCS-M10×12-F | 12 | 5 | M10 | φ7 | (φ6) | (0.6) | 5 |
| TM-SCS-M10×16-F | 16 | | | | | | 7 |
| TM-SCS-M10×25-F | 25 | | | | | | 11 |
| TM-SCS-M10×35-F | 35 | | | | | | 16 |
| TM-SCS-M12×16-F | 16 | | | | | | 10 |
| TM-SCS-M12×20-F | 20 | 6 | M12 | φ8.5 | (φ7.2) | (0.75) | 12.5 |
| TM-SCS-M12×30-F | 30 | | | | | | 20 |
| TM-SCS-M12×40-F | 40 | | | | | | 28 |
| TM-SCS-M16×20-F | 20 | | | | | | 22 |
| TM-SCS-M16×25-F | 25 | 8 | M16 | φ12 | (φ10.7) | (0.9) | 28 |
| TM-SCS-M16×35-F | 35 | | | | | | 41 |
| TM-SCS-M16×50-F | 50 | | | | | | 48 |

特注品のご相談承ります Please contact us for custom-made.